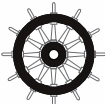


# JUE-95SA

## Inmarsat C SSAS



Complies with latest IMO regulations according to MSC.136(76) / MSC.144(17)

*– JRC introduces a highly reliable SSAS system recognised for its unique role in the maritime safety*

**Compact antenna design**

**Easy installation**

**Built-in GPS receiver**

**Low cost of ownership**

**Fully meets IMO requirements for SSAS**

# JUE-95SA Inmarsat C SSAS – performance features

## Unique features

- The JUE-95SA is a small, lightweight and highly reliable terminal, recognised for its unique role in maritime safety and plays an integral part in the safety of life at sea.

## About SSAS

Ship Security Alert Systems (SSAS) is a system that contributes to the IMO's efforts to strengthen maritime security and suppress acts of terrorism and piracy against shipping. In case of attempted piracy or terrorism, the vessel's SSAS function can be activated and appropriate law-enforcement or military forces can be alerted.

## Compact solution

JRC has developed a compact, mobile satellite communication system. The JUE-95SA Inmarsat C SSAS utilises two-way data/messaging communications anywhere in the world. New IMO requirements state two security alarm buttons must be provided. These are located discreetly on the vessel and can be activated in case of piracy or terrorist attack. It will allow covert activation which transmits an alert signal from vessel to shore, alerting the appropriate authority that the security of the vessel is under threat or has been compromised. The SSAS system will not raise the alert onboard the vessel, nor alert any other ships.

If vessels have older Inmarsat C systems onboard, you can simply install JRC's JUE-95SA in order to comply with current SOLAS regulations.



## JRC StarNetwork™

JRC has been providing sales and support of products since 1915. Today, JRC offers comprehensive assistance through its organisation, in partnership with a worldwide StarNetwork™ of over 270 fully trained and qualified partners and agents, assisting you 24 hours a day, 7 days a week and 365 days a year.



**JRC one-call™**

**One number to call**  
With JRC you can go anywhere and if you need our support, simply call us at +81 3 3492 9201, anytime.

# JUE-95SA Inmarsat C SSAS – system flexibility

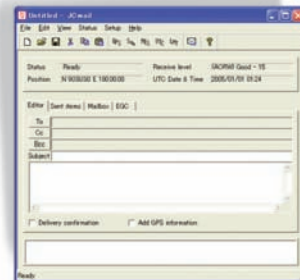
## Self diagnosis

JRC's mobile JUE-95SA terminal incorporates various self-diagnostic programmes to facilitate maintenance and troubleshooting, reporting any possible problems it might suffer. The results are displayed on the data terminal. These functions will allow for easy maintenance and more reliability. In addition, automatic testing for performance verification and commissioning via the satellite channel is also available.

## JCmail

JCmail, a freeware application developed by JRC, enables you to transmit and receive email messages very easily on your PC.

Note: Although JUE-95SA operates on Inmarsat C principle it does not support EGC message reception.

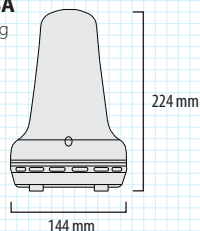


## Flexible installation

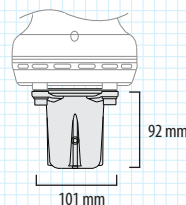
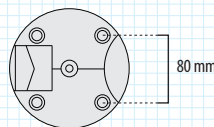
The JUE-95SA system has the same cable management philosophy resembling all other Inmarsat products that JRC is offering, allowing for an easy installation as only a single coax cable is used between antenna and terminal. Both are very compact and can be easily installed on any size and type of vessel.

### Dimension drawings - Antenna, Polar mounting bracket

**NAF-742SA**  
Weight 1,5 kg



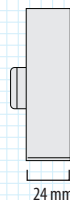
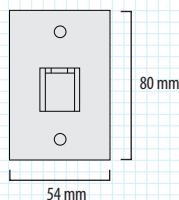
**MPXP33401<sup>1</sup>**  
Weight 0,8 kg



<sup>1</sup> pole mounting bracket is included as standard - pole Ø 34mm

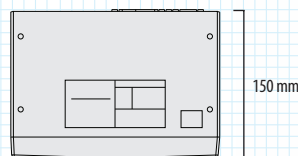
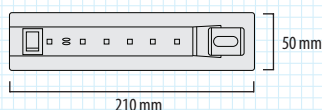
### Dimension drawings - Security button

**NQE-3154**  
Weight 350 g



### Dimension drawings - Terminal

**NTF-782SA**  
Weight 1,3 kg



# JUE-95SA Inmarsat C SSAS

## – specifications

### What's standard in the box?

1. Antenna	<b>Which cables?</b>	
2. Terminal	Antenna to terminal	30 m
3. Security buttons (2)	Power cable to terminal	2 m
4. Cables	Security button to terminal (2)	5 m
5. Pole mounting bracket		
6. Spare parts		
7. Manual (English)		
8. SSAS setup tool (CD-ROM)		

Model		JUE-95SA
IMO type approved		✓
Class of Inmarsat C MES		Class 1
Terminal and antenna		
Model – terminal	NTF-782SA	
Model – antenna	NAF-742SA (including pole mounting bracket)	
Frequency	TX 1626.5MHz - 1646.5MHz	
	RX 1530.0MHz - 1545.0MHz	
	GPS 1575.2 MHz ±1MHz	
Channel spacing	5KHz	
G/T	-23.7dB/K minimum at 5° angle	
E.I.R.P.	+7 to +16dBW	
Modulation	TX and RX: 1200 symbols/sec BPSK	
Data rate	TX: 600bps	
	RX: 600bps	
Antenna	type: helical	
	pattern: hemisphere	
	polarisation: right hand circular	
Power supply voltage	DC 24V (+30% -20%)	
Power consumption	TX 75W, RX 25W	
Ambient condition	antenna: -35°C +55°C	
	terminal: -15°C +55°C	
Preservation temperature	-40°C +80°C	
Relative humidity	+40°C up to 95%	
Icing	up to 25mm (antenna)	
Precipitation	100mm/hour (antenna)	
Wind	up to 100 knots	
Vibration	as specified by Inmarsat	
Optional items		
Power supply unit (AC/DC)	NBD-577C	

All specifications are subject to change without notification.

For further information please contact:



**Japan Radio Co., Ltd.**

JRC

Cessnalaan 40-42

1119 NL, Schiphol-Rijk, The Netherlands

**T** +31 20 6 580 750

**F** +31 20 6 580 755

**E** sales@jrceurope.com

**W** www.jrceurope.com